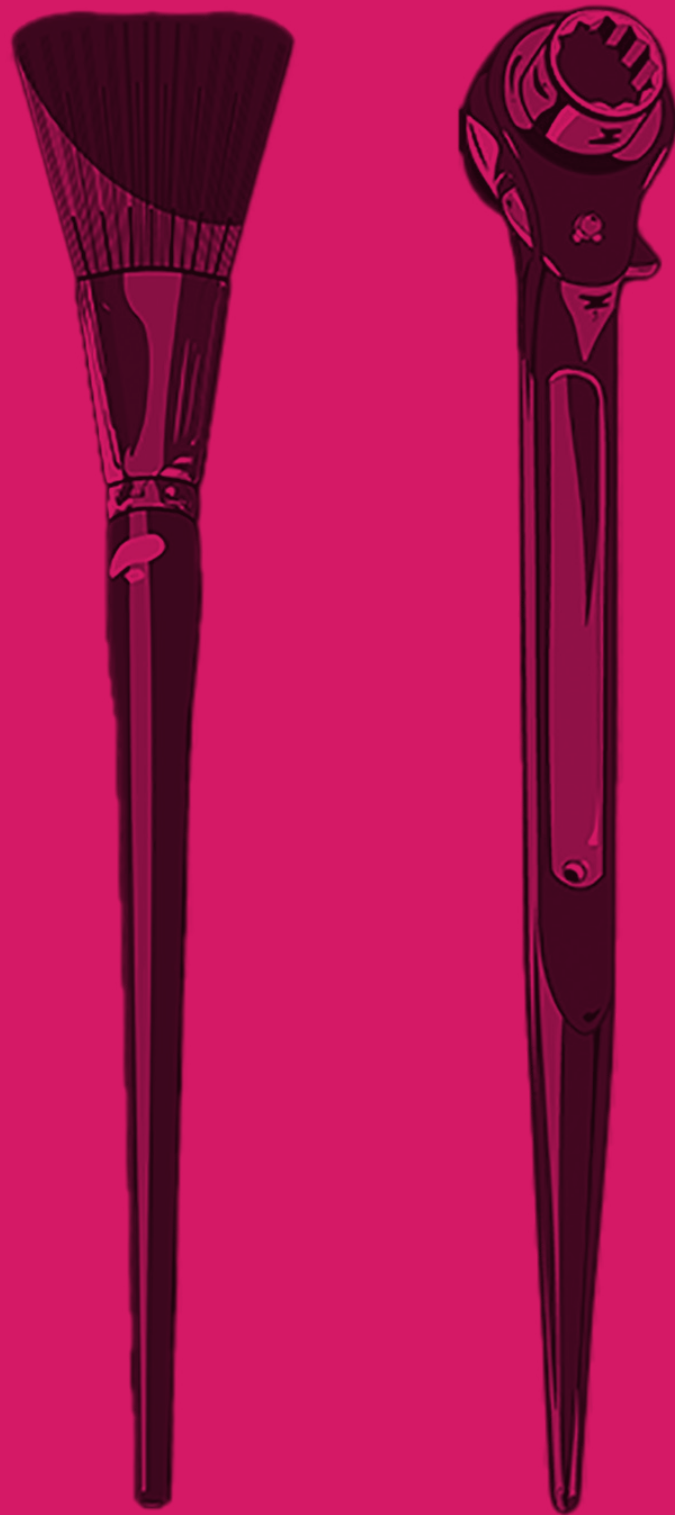


Scenic Fabrics & Flooring



FLINTS

The one-stop-shop that delivers to your door

A note on our range of fabrics

Flints' range of fabrics covers the most popular materials used backstage. There are special prices for the purchase of whole rolls. We have included a page for Made-Up Cloths [page 155]. The following abbreviations are commonly used to denote the fire ratings:

NDFR = Non-durably flame retardant: These fabrics will need retreating if they get wet or are washed.

DFR = Durably flame retardant: These fabrics will withstand several cleanings.

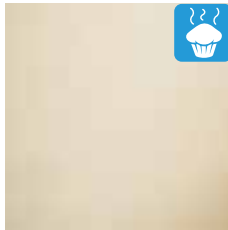
Not FR = Not fire retardant: These fabrics have not been treated.

See fire retardants on page 78

CANVAS AND CALICO

Cotton Scene Canvas 300 g/m²

NDFR. Natural colour. A wider but lighter weight canvas ideal for covering plywood. It can be subjected to more wear and abuse than calico could withstand. Recommended glues include Sheppy M289, FlintsBond and Clam 2.



code	width	weight	per m	per roll approx 50 m
PRO520	approx 9'	2.66m	300g/m ²	£12.95 metre price less 10%

Calico 195 g/m²

NDFR. Natural colour. A good economical lightweight material suitable for covering plywood clad flats. Calico, being rather lightweight, will not disguise poor joins between ply sheets which may need filling [see pages 55-56 for suitable fillers]. If the surface is very poor, cotton canvas may be a better choice. Recommended glues include FlintsBond, Sheppy M289 and Clam 2.



code	width	weight	per m	per roll approx 50 m
PRO540N	approx 10'6"	3.2m	195g/m ²	£13.35 metre price less 10%

Calico 156 g/m²

Not FR. We stock a non FR version as the FR version has become expensive. It's very easy to treat the fabric with a flame retardant yourself, for options see our Flame Retardants section (from page 78). Natural colour. A good economical lightweight material for covering plywood clad flats. Calico, being rather lightweight, will not disguise poor joins between ply sheets which may need filling. If the surface is very poor, cotton canvas may be a better choice.



NEW

code	width	weight	per m	per roll approx 50 m
PRO560	approx 8'	2.48m	156g/m ²	£5.52 metre price less 10%

BLACK MATERIALS

Black Casement

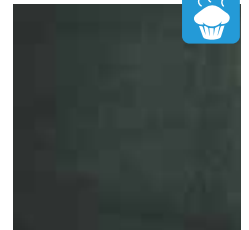
NDFR. Black. Lightweight, good value. Its main use is exhibition ceilings but can be attached to lightweight flats with staples and used to hide unsightly messes. If do you need to glue try FlintsBond and Sheppy M155 but beware of bleed through. New wider version now available for easier wrapping of flats and stapling behind.



code	width	weight	per m	50m+
PRO530N	approx 59"	1.53m	140g/m ²	£3.40 £3.06

Super Wool Serge 500-525 g/m²

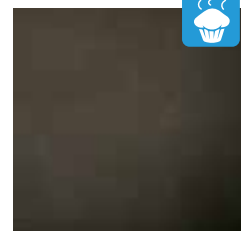
DFR. Black. Wool serge provides the best material for masking. This heavyweight fabric is durably fire retardant and has less sheen than velour. Perfect for covering masking legs and borders or for making tabs. Serge is not normally glued to flats but just folded back on itself and stapled. If glue is needed around profiled edges we recommend Flints Cyclorama Glue used dry with a little PVA or Copydex on the edges. If wing flats are being used to mask lanterns it may be necessary to double cover in Bolton and then serge to avoid light leaks.



code	width	weight	per m	per bolt approx 50 m
PRO508	approx 5'	1.5m	500-525g/m ²	£13.42 metre price less 10%

Bolton Twill 265 g/m²

NDFR. Black. A more economical masking material than serge. Also useful as a protective black backing to increase the density of serged masking flats which may otherwise bleed light from nearby lamps. See also Black Fosshape [page 111], Black Plastazote/EVA [page 111], and Black Display Felt.



code	width	weight	per m	per roll approx 50 m
PRO500	approx 4'	1.22m	265g/m ²	£4.75 metre price less 10%

EXHIBITION DISPLAY FELT

Display Felt 135 g/m²

NDFR. Although lightweight, this display felt is actually 1 mm thick. Display felt is flame retardant and so ideal for display and exhibition purposes. It is also a good choice for notice boards. It is not as durable as Serge or Bolton so it is not often used in theatre scenery.

Achieves BS5867 Part 2 Type B, EN13501-1 Fire rating standard. 40% wool, 60% synthetic. 1 mm thick. Roll length: 60 m approx.



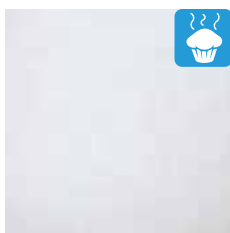
code	width	weight	per m	30+
PRODFS76	1838mm	150g/m ²	£13.59	£11.25

SCENIC & DISPLAY FABRICS

SCRIMS AND HESSIAN

Muslin 50 g/m²

NDFR. White. A very light material typically used for scrimming over polystyrene carvings. Recommended glues include FlintsBond and Sheppy M289.



code	width	weight	per m	per roll approx 100 m
PRO504	approx 4'	1.22m	50g/m ²	£3.20 metre price less 10%

Jute Scrim 85 g/m²

Not FR. Natural colour. An open weave jute scrim normally used to reinforce plaster waste moulds but could be used to reinforce and add texture to large scale polystyrene carvings. Recommended glues include FlintsBond and Sheppy M289.



code	width	weight	per m	per roll approx 200 m
PRO510	approx 3'	0.91m	85g/m ²	£0.98 metre price less 10%

Hessian 272 g/m²

NDFR. Natural colour. A fire retardant hessian which can be used for its decorative effect or as a tough economical scrim. It is occasionally used as a backing material to protect black serge flats. Recommended glues include FlintsBond and Sheppy M289.



code	width	weight	per m	per roll approx 50 m
PRO501	approx 6'	1.83m	272g/m ²	£5.45 metre price less 10%

FOAM LINING

Foam Lining

2 mm thick grey foam lining which can be used under display felt and display PVC to provide a super smooth surface. It covers minor discrepancies in ply claddings and it gently rounds off edges.



NEW

code	width	per m	50+
PRODF06N	1350mm	£3.95	£3.71

FROST FILM

Frost Film [Purifrost]

Self-adhesive clear frosted films for obscuring windows. To apply, wet the adhesive side with soapy water, apply to the window, and squeegee out any bubbles from the centre outwards. See also Frost Spray [page 77] and Frost Varnish [page 63].



code	length	width	price
PROPURL21	2m	1m	£25.00

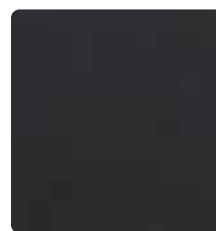
SELF-ADHESIVE VINYL

Patifix [Fablon replacement]

Patifix is a high quality heavy-duty self-adhesive decorative vinyl made using non-toxic material and a special glue. Patifix is greatly versatile and is ideal for set dressing, covering table tops and display work.



White



Black



Red Gloss

code	Colour	length	width	price
PRO101005	White	15m	450mm	£31.45
PRO101000	Black	15m	450mm	£31.45
PRO101325	Red Gloss	15m	450mm	£31.45

SQUEEGEES

Wooden Squeegees

Useful for laying vinyl floors. The rubber can also be cut away so that they can be used to apply wood grain texture to areas where the small Rubber Rockers [page 87] would be inappropriate. Supplied without broom handles. See 384 page for 1 1/8" handles to fit.



code	width	price
SAFWT513	18" 457mm	£5.90
SAFWT515	24" 610mm	£6.68



For Black Car Carpet for your wing spaces, off-stage rostra or getoffs go to page 160. See also Black Fosshape [page 111], Black Plastazote [page 111], and Black Display Felt [page 153].

Made-up Cloths

Top quality theatrical drapes made to your own dimensions. When ordering special sizes our sales staff will ask you to email through a confirmation to avoid any mistakes. Please allow 10 – 14 days for delivery. The cloths are specially made for you and so cannot be returned. Regrettably we can no longer offer indicative pricing as there was too much variation between orders so we will quote each enquiry individually. The following sizes and constructions have proven the most popular over the years, but virtually any size of cloth is possible. Our Customer Services team will be able to assist you to make the right choice.

Jargon Buster

In this section, the following terms are used:

Legs: Tall vertical cloths used typically to form the sides of a soft proscenium arch and for masking off wing space.

Borders: Wide horizontal cloths used to form the top of a soft proscenium arch and to mask off lanterns.

Half tabs: Half of a curtain which meets in the centre.

Full tabs: A full width cloth either flown in or tracked all from one side.

Fullness: Extra cloth is sewn into the header tape to form a fuller drape appearance.

Flat cloth: A cloth with no extra fullness to form a modern plain flat effect.

Conduit pocket: A base pocket to slide conduit [not supplied] into to form a very neat bottom edge on flat cloths.

Chain pocket: A base pocket containing a chain for use on cloths with fullness or cloths on tab tracks.

Web tape top/hem sides [wtt/hs]: A strong webbing with cloth ties is sewn into the top of the cloth to connect to a tab track or flying bar [available for sale see page 241]. The sides are hemmed.

Black Serge Drapes [wtt/hs]

Best quality durably flame retardant wool serge is used to construct these long-lasting deep black drapes.

Also see Conduit [page 249] and Tab Tracks [page 241].



code	Style	Fullness	Base	width	drop	width	drop
PROS124	Leg	Flat	Conduit	4'6"	12"	1.37m	3.65m
PROS206	Leg	Flat	Conduit	7'6"	20"	2.28m	6.09m
PROS124C	Leg	50%	Chain	5"	12"	1.52m	3.65m
PROS206C	Leg	50%	Chain	6"	20"	1.83m	6.09m
PROS430	Border	Flat	Conduit	30"	4"	9.14m	1.22m
PROS640	Border	Flat	Conduit	40"	6"	12.19m	1.83m
PROS430C	Border	50%	Chain	30"	5"	9.14m	1.22m
PROS640C	Border	50%	Chain	40"	6"	12.19m	1.83m
PROS1630	Full tab	Flat	Conduit	30"	16"	9.14m	4.87m
PROS2040	Full tab	Flat	Conduit	40"	20"	12.19m	6.09m
PROS1630C	Full tab	50%	Chain	30"	16"	9.14m	4.87m
PROS2040C	Full tab	50%	Chain	40"	20"	12.19m	6.09m
PROS1616	Half tab	Flat	Conduit	17"	16"	5.18m	4.87m
PROS2020	Half tab	Flat	Conduit	20"	20"	6.09m	6.09m
PROS1616C	Half tab	50%	Chain	16"	16"	4.87m	4.87m
PROS2020C	Half tab	50%	Chain	20"	20"	6.09m	6.09m

Scenic Flax Backcloths [wtt/hs]

NDFR. Scenic flax cloths made-up with horizontal seams and a conduit base pocket. Before painting these cloths carefully tack them out onto a wooden floor or paint frame to avoid shrinkage and hold them square.



code	width	drop	width	drop
PROBC2012	20"	11'6"	6.09m	3.5m
PROBC2416	24"	15'6"	7.31m	4.72m
PROBC3020	30"	19'6"	9.14m	5.94m
PROBC4024	40"	23'6"	12.19m	7.16m

Scenic Gauze Cloths [wtt/hs]

NDFR. Seamless scenic gauze cloths made-up with a conduit base pocket. Scenic gauze is a very fine gauze which virtually disappears to the eye when the gauze is unlit while the scenery behind is lit. Available in white and black.



code	Colour	width	drop	width	drop
PROBG2012W	White	20"	12"	6.09m	3.65m
PROBG2416W	White	24"	16"	7.31m	4.87m
PROBG3020W	White	30"	20"	9.14m	6.09m
PROBG4024W	White	40"	24"	12.19m	7.31m
PROBG2012B	Black	20"	12"	6.09m	3.65m
PROBG2416B	Black	24"	16"	7.31m	4.87m
PROBG3020B	Black	30"	20"	9.14m	6.09m
PROBG4024B	Black	40"	24"	12.19m	7.31m

Sharkstooth Gauze Cloths [wtt/hs]

NDFR. Seamless sharkstooth gauze cloths made up with a conduit base pocket. Sharkstooth gauze is a heavier gauze which can take dyes and paints to form a more solid effect when front lit. Available in white and black.



code	Colour	width	drop	width	drop
PROBSG2012W	White	20"	12"	6.09m	3.65m
PROBSG2416W	White	24"	16"	7.31m	4.87m
PROBSG3020W	White	30"	20"	9.14m	6.09m
PROBSG4024W	White	40"	24"	12.19m	7.31m
PROBSG2012B	Black	20"	12"	6.09m	3.65m
PROBSG2416B	Black	24"	16"	7.31m	4.87m
PROBSG3020B	Black	30"	20"	9.14m	6.09m
PROBSG4024B	Black	40"	24"	12.19m	7.31m

CLOTH STORAGE BAGS

Cloth Storage Bag

Tough PVC bags to store your cloths safely and protected them from dust and damp.



code	width	drop	width	drop	price
PROPVC	3"	5"	914mm	1525mm	£39.00

MADE-UP CLOTHS / FABRIC SUNDRIES

HEADER TAPE AND TIES

Sewn Ties

Ready to make your own cloths? In black or white with a matching header.

SPECIFICATION: Tie length [ex header]: 390 mm. Tie width: 25 mm. Header width: 50 mm. Gap between ties: 275 mm approx.



code	Colour	per m	50+
PROWTBN	Black	£2.25	£2.00
PROWTWN	White	£2.25	£2.00

Loose Ties

Flame retardant webbing on a 100 m roll suitable for making tabs for cloths. Ideal for repairs. Available in black or white.



code	Colour	length	width	price
PROWTBTIESN	Black	100m	25mm	£66.50
PROWTWTIESN	White	100m	25mm	£66.50

FABRIC SUNDRIES

EYELETS

Hipkiss Eyelet Kits

Ideal for the small job. These easy to use kits include the punch and die as well as the eyelets and rings. Very good value.



code	size	qty	diameter	price
GENI61	PP22	25	7.94mm	£12.60
GENI62	PP24	25	9.53mm	£14.14
GENI68	PP28	15	12.7mm	£19.98

Loose Eyelets

These loose eyelets are supplied as eye and ring in bags of 100. They are available in cleaned brass, nickel-plated, and epoxy black. Solid stainless eyelets can be ordered, please phone for details. Larger sizes are also available to order.



code	Material	size	internal diameter	per 100	1,000
GENI58	Brass	20	6.7mm	£8.32	£7.49
GENI65	Brass	22	7.94mm	£9.95	£8.95
GENI67	Brass	25	10.31mm	£12.70	£11.43
GENI69	Brass	27	11.9mm	£22.28	£20.05
GENI60	Brass	30	15.87mm	£25.12	£22.61
GENI59	Brass	32	19.05mm	£39.95	£35.95
GENI58N	Nickel	20	6.7mm	£8.65	£7.79
GENI65N	Nickel	22	7.94mm	£9.95	£8.95
GENI67N	Nickel	25	10.31mm	£12.70	£11.43
GENI69N	Nickel	27	11.9mm	£22.28	£20.05
GENI60N	Nickel	30	15.87mm	£25.12	£22.61
GENI59N	Nickel	32	19.05mm	£39.95	£35.95
GENI65B	Epoxy Black	22	7.94mm	£9.95	£8.95
GENI67B	Epoxy Black	25	10.31mm	£12.70	£11.43
GENI69B	Epoxy Black	27	11.9mm	£22.28	£20.05
GENI60B	Epoxy Black	30	15.87mm	£25.12	£22.61
GENI59B	Epoxy Black	32	19.05mm	£39.95	£35.95

Hand-Closing Tools

The hand-closing tool consists of a punch and die.

code	for size	price
GENI58HCT	20	£19.98
GENI65HCT	22	£25.35
GENI67HCT	25	£32.00
GENI69HCT	27	£32.00
GENI60HCT	30	£42.00
GENI59HCT	32	£43.00



Wad Punches

The wad punch is for cutting the hole through the material. NB: When using non-malleable heavy-duty stable materials such as vinyl tarpaulin we find you need to wad punch one size bigger.

code	diameter	for size	diameter	price
GENI58WP	1/4"	20	6mm	£11.70
GENI65WP	5/16"	22	8mm	£12.70
GENI67WP	3/8"	25	9mm	£15.30
GENI69WP	7/16"	27	11mm	£14.98
GENI60WP	9/16"	30	14mm	£19.00
GENI59WP	3/4"	32	19mm	£20.55



Wad Punch Set

Wad Punch Set with 1 handle and 9 punches from 5 to 32 mm, a complete kit! Simply screw the required size punch to the handle, centre the hole to be cut on the spring loaded plunger and strike with a hammer or mallet. Cuts neat holes in a range of soft materials, felt, rubber, plastic, cork etc. Punch sizes in set: 5, 6, 8, 10, 12.5, 16, 20, 25 and 32 mm.

NEW



code	price
TOL100005	£60.09

PINS

Kilt Pin

A giant safety pin ideally suited to shortening black serge drapes.



code	description	length	qty	price
GEN090	Kilt Pin	76mm	each	£0.70

Safety Pins

A choice between the bog standard safety pin or the useful black version.



code	description	length	qty	price
	Bog Standard Pin	34mm	144 pack	£4.95
GEN095B	Black Safety Pin	34mm	100 pack	£5.85

TAG GUNS

Tach-it 2® Tag Gun

A versatile tag gun engineered for operator comfort. The Tach-it guns are built to last with a maintenance-free internal mechanism. They are used widely in warehouses, shops and factories throughout the world. The blue triggers denote the use of a standard needle.



code	description	length	qty	price
STPG203S	Gun			£23.85
STPNS	Spare needles		3 pack	£14.65
code	description	length	qty	price
STP1015B	Heavy-duty Black Nylon	15mm	10000	£21.25
STP1015N	Heavy-duty Natural Nylon	15mm	10000	£22.94

Avery Dennison Mk11 Tag Gun

A good value gun using a conventional needle incorporating a cutting blade.



code	description	length	qty	price
STP201	Tag Gun			£11.78
STP221	Spare needles		5 pack	£18.75
code	description	length	qty	per 5,000
STP211	Black Nylon	15mm	5000	£14.85
STP212	Natural Nylon	15mm	5000	£13.25
STP213	Natural Polypropylene	20mm	5000	£10.13

Avery Dennison Super Heavy Duty Tag Gun

Another request from a customer, apparently the above guns just don't cut it! Jack, our Product Manager, tested these on all our scenic fabrics, and found that it handles thick materials really well (including 6mm plastazote), and the extra strong tags are perfect for joining materials together, such as wool-serge temporary hems! Jack also found the gun fired reliably regardless of which tags were used. Could also be used for tagging things to corrugated cardboard.

The needles are an investment that will last a long time. Each gun comes with one needle fitted.



code	description	length	qty	price
STP10637	Tag Gun			£69.55
STP10643	Spare needles		4 pack	£88.95
code	description	length	qty	per 5,000
STP10575	T-end Nylon	19mm	5000	£23.58
STP10576	T-end Nylon	32mm	5000	£23.58

SPEEDY STITCHER

Speedy Stitcher Sewing Awl

The Speedy Stitcher can be used to sew any heavy material such as leather or several layers of thick canvas. Use it to repair tents, awnings, cloths, sails, upholstery, shoes, floor cloths etc. So easy even a man can use it. Very popular.



code	description	Type	length	price
TOLSS	Speedy Stitcher			£18.46
TOLSS1507	Spare cord	Fine	180 yds	£15.23
TOLSS1506	Spare cord	Coarse	180 yds	£16.76

GAUZE HANKS AND WIRE RUNNERS

Gauze Hanks

A very useful clip for fixing gauzes to tension wires. The clip grips the cloth by means of a small screw. The clip is then offered up to the tension wire at right angles and twisted to lock in place.

The gauze can then silently slide up and down the wires whilst remaining stretched. Only available in Black. Also see Pelican Hooks [page 210].



code	Colour	fits wire min	fits wire max	price	50+
HA244B	Black	5mm	6mm	£1.29	£1.16
HA144B	Black	4mm	5mm	£0.70	£0.63

Cloth Stretching Pulley

Occasionally when stretching a cloth or gauze between two vertical wires it is preferable to use pulleys to run along the wires rather than Gauze Hanks. This quiet smooth-running pulley has a removable clevis pin so it can be inserted onto made-up wires. Its weight and lack of friction helps the cloth fly in. The clevis pin can go straight through a well-placed eyelet in the cloth but, if there are no eyelets, why not take a look at Holdons on the next page and Spaniflex, the useful adjustable bungee loops [page 224]?



Showing the Wire Runner used with a Spaniflex and a Holdon



code	price	50+
BARN99115	£5.58	£5.12

FABRIC SUNDRIES

PIPESNAPS

Pipesnaps

A great product to radically speed up rigging and demounting drapes. The Pipesnap quickly clips onto any 50 mm Ø barrel. The weight of the cloth holds it securely in place. To release it, a cord can be attached to the hole on the rear of the clip. When the cord is pulled the clip cants back and releases from the bar. The clips can be linked with a cord so that fewer hauling cords are needed to release entire cloths.



code	price	50+
PROPS	£5.26	£4.33

OMEGA CLIPS

Omega Clips

This fitting clips neatly over scaffold or truss tubes. It enables cloth to be neatly attached to the top of truss or a cross bar without the need for unsightly ties or eyelets.



code	price	10+
PRO7686B	£2.50	£2.25

CYC CLAMPS

Cyc Clamp

Heavy-duty cyclorama clamps ideally suited for stretching large backdrops to prevent unsightly creases. Why spoil a beautifully painted cloth for the sake of some strategic "Cyc Clamps"?



code	price	50+
PRO9280	£14.60	£12.60

LEAD FREE DRAPERY WEIGHT TAPE

1.5" Lead Free Drapery Tape

First brought in as a special for the Props and Costume departments of the National Theatre, this drapery tape is great for weighting down skirts, cloaks, and even drapes! Many workshops are working towards being lead free to protect their staff, so the steel weights in this tape help with that. The polyester sheath allows for it to be quickly sewn along a hem. Each weight [25 x 25 mm] is sealed at 45 mm increments to allow the quick and easy adjustment of length. Sold per metre, max length 22.86 m. Weighs 248 g / m



code	width	width	price	22m+
PROLF90	1.5"	38mm	£5.50	£4.95

HOLDONS

Holdons®

These clever Swedish clips will grip any flexible material and provide a strong hanging point without the need for conventional eyelets. The more you pull, the more they grip. They provide the following advantages over eyelets:



- ✓ Banners can be rolled up totally flat without any eyelet damage
- ✓ Fixing points can be selected exactly where they are needed whilst on-site
- ✓ Excellent load capacity of 45 kg for the new Xtra Holdon (which replaced the Mini) and 100 kg for the Midi Holdon
- ✓ No tools needed just push to fit
- ✓ Completely reuseable and relocatable
- ✓ Ideal for stretching cycloramas

Holdon Xtra opens up to 4mm but holds materials that can be compressed down to 1.5 mm, Holdon Midi holds flexible materials up to 5mm thick.

code	Type	Colour	price	50+
HOLDMIDIB	Midi	Black	£1.29	£0.86
HOLDMIDIW	Midi	White	£1.29	£0.86
HOLDXTRAB <small>NEW</small>	Xtra	Black	£1.05	£0.94
HOLDXTRAW <small>NEW</small>	Xtra	White	£1.05	£0.94

TRUSS SLEEVE

TrussSleeve®

Bored with the "Truss Look" trade show stand? Then TrussSleeve is the innovative product for you. Instead of being a technical necessity, trusses become a decorative element. When lit from the inside the light is nicely diffused due to the ribbed fabric structure. TrussSleeve is inherently flame retardant and can be washed without losing its FR properties. The fabric is seamless and can be perforated allowing you to attach lights and hide cables. TrussSleeve is available in black or white. The 270 mm size we stock will fit a 300 x 300 mm three chord truss loosely or 300 x 300 mm four chord and 400 x 400 mm three chord trusses tightly. Also available to order to fit larger trusses. Full roll lengths are approximately 50 m. To paint truss, see HATO®Truss on page 13. Now made with 50% recycled yarn!



code	Colour	width	per m	10m+
PROTS27B	Black	270mm	£23.42	£21.07
PROTS27W	White	270mm	£21.57	£19.41

SELF ADHESIVE METALLIC VINYL

Smooth Silver and Gold

There is a very slight ripple effect to the Smooth films duplicating a beaten metallic surface. Silver and Gold are sold in both 610 mm and 1.3 m widths.



code	Colour	width	per m	10m+	45.7m+
DES0027	Silver	1.37m	£17.37	£15.05	£13.55
DES0028	Gold	1.37m	£17.37	£15.05	£13.55

ROSCO MIRRORS

Mirrors

A variety of reflective surfaces in a metallised plastic format. Although the rigid mirror is certainly thicker than the thin mirror it is not exactly rigid - which is how we can sell it by the roll! We would recommend Display Mount to glue smaller areas and Flints Cyclorama Glue [page 146] for larger areas. Care must be taken to ensure that the Cyclorama glue surface is smooth before applying the mirror. Rolling the wet glue with a damp short hair roller will assist. Regrettably Rosco have discontinued almost all their mirrors, so we are selling the last of our stocks. The Thin Gold & Silver mirrors are not discontinued but now fall under their gels range, however for simplicity we list them here. Note the size and code change though!

code	Colour	length	width	price
ROS393002	Rigid Gold	9.15m	1.35m	£130.00
ROS3814	Thin Gold	7.62m	1.22m	£60.50
ROS3813	Thin Silver	7.62m	1.22m	£60.50



ROSCO BLACKOUT FILM

Rosco Blackout Film

Portable Blackout on a roll for film makers, photographers or broadcast. It's 99.9 % opaque polyester, water repellent and lightweight. Use it to cut light by clipping it to a frame or directly on to windows. As it's a vinyl type material you can stick it on to windows by applying soapy water to one side and placing it on to the window, smoothing it out on to the surface without the need for gaffer tape. Create your own DIY Cuculoris (aka. Cookie) by cutting out shapes from the roll to modify light to make it more natural, think of the way that light shines through leaves on a tree. Not to be used on a light fixture as it's not temperature resistant, that would be a job for blackout cinefoil.

Specification: Thickness: 76 micron (0.076 mm), Roll Width: 60" (152.4 cm), Roll Length: 20' (6.1 m), Finish: Black Matt/Frosted

NEW

code	description	width	length	thickness	price
ROS02766020	Roll Size	1524mm	6100mm	76 microns	£122.00



Flooring

Flints stocks a wide range of flooring and ancillary products to cover virtually any stage requirement. Our thick fire retardant underfelt can be used to deaden the underside of rostra tops or it can be cut up and textured to provide relief to the stage surface. Our comprehensive range of Dance Floors are suited to either touring or permanent installation. We also stock special paints for painting Dance Floors [see Hatocel on page 37] and the remarkable "Re-Use-It" [see page 298] to simplify floor laying. For exhibitions the Self-adhesive Vinyl provides stunning results and is quick and easy to lay. Please phone if you need any advice.

UNDERFELT

Underfelt BS 4790:1987

[Hot Metal Nut Method]. This new formulation of recycled jute and wool FR-grade underfelt offers improved compression and recovery rates. It is ideal for sound deadening the underside of rostra tops virtually eliminating any "drumming" effect. It is also very useful for adding relief to textured floors and stage landscapes. It can be covered in FlintsMud. Please check with your local fire authority regarding its suitability for your particular applications.
SPECIFICATION: Thickness 11 - 12 mm. Density: 2,034 gm³. Width: 1.37 m. Roll length: 12.5 m. Compression: 26.22%. Recovery: 73.78%.



code	description	width	width	price
PRO507	Per linear metre	4'6"	1.37m	£17.11
PRO507D	Per 12.5 m roll	4'6"	1.37m	£165.50

BLACK CARPET

Black Car Carpet

A useful economical black carpet ideally suited for quietening down wing spaces, off-stage rostra and get-off treads. The carpet is needlepoint rib 100% polypropylene with a latex backing. The pile weight is 400 gm² and the total weight is 450 gm². The carpet has been tested to BS 4790:1987 [Hot Metal Nut Method]. To glue the carpet to large areas why not use Treadfast 108. For small areas try Ambersil NC500 Spray Adhesive [page 150].



code	description	width	price
PROQSTBD10	Per 10 m roll	2m	£197.78
PROQSTBD	Per 30 m roll	2m	£518.36

SELF-ADHESIVE VINYL FLOORING

To lay the floor, you'll need three people!

1. Clean the floor thoroughly so it is dust-free and smooth.
2. Repeat step 1 but do it properly this time
3. Unroll the vinyl face down [adhesive up] and peel off the backing.
4. With one person at each end, turn the vinyl over. Hold it off the floor.
5. Let the middle of the length touch the floor. The third person uses the rubber squeegee from the centre and works outward to expel any air bubbles.
6. Overlap the next strip by 25 mm. Double up in high wear areas. Easy!

Self-Adhesive Floor Vinyl

1.22 m [4'] wide rolls of vinyl with a low tack removable adhesive for temporary floor covering. Available in standard thickness of 80 microns and also in a very easy-to-lay heavy-duty 175 micron thickness. 50 m rolls. Applying self-adhesive vinyl to dance floor will effect the co-efficient of friction. To lay the floor see above.
Available in other colours and with permanent adhesive.



code	Type	Colour	width	thickness	price
PRO105MB	Matt	Black	1.22m	80 microns	£315.20
PRO200GB	Gloss	Black	1.22m	175 microns	£366.23

Wooden Squeegees

Indispensable for laying vinyl floors.



code	width	width	price
SAFW513	18"	457mm	£5.90
SAFW515	24"	610mm	£6.68

DANCE FLOOR GLUE

Treadfast SF 108

A pressure sensitive adhesive ideal for vinyl dance floor or car carpet. It is solvent-free, non-flammable and has low toxicity. Treadfast 108 gives a strong permanent bond. Use a 1.5 mm x 5 mm notched trowel to apply and immediately roll with a shorthaired paint roller dampened with the adhesive. Allow to dry [goes clear] then position and roll with 68 kg roller. Covers 6 - 8 m² per L.



code	volume	price
ADH1085	5L	£64.84
ADH10815	15L	£161.40

Adhesive Trowels

Handy for rapid and even application of Treadfast 108.



code	description	notch depth	notch gap	price
ADHTAS007	Large	1.5mm	5mm	£20.00
ADHTAS007B1	Spare Blade for above	2mm	5mm	£5.23

Dance Floor Instructions

These tips should help you get the best results from your new dance floor.

Acclimatisation: Dance floors are affected by the temperature, the harder floors suitable for tap and heavy scenery are more affected by cold weather than the softer floors such as Super Bravo. In very cold weather some floors can become brittle. If your floor is freezing cold then it should be left to acclimatise to the room temperature [13-27°C]. This could take 24 hours or longer.

Laying the Floor: Check the floor is perfectly flat and free of nails etc. Once your dance floor is at ambient room temperature it should be rolled out and allowed to lay flat, ideally overnight, occasionally longer. In a theatre, bring up the lights so the floor achieves the maximum temperature it will achieve during the performance. There should be a 1 – 2 mm gap between the seams and a 12 mm gap around the edges if the floor is abutting walls. Only when completely flat can the seams and edges be top taped. Change the top tape every four months and Double-Sided Tape [page 298] every two years. If you prefer to tape to the floor using double-sided tape then it is vitally important the floor achieves the highest performance temperature. When the floor is fully acclimatised and completely flat, place a row of stage weights on a board along one end and gently roll the floor back onto its storage tube. Position the double-sided tape around the edges and down the middle leaving the protective paper on the top. Roll out the floor again to check positioning. If it is fine, roll it back up, remove the protective paper exposing the adhesive tape then roll out. Repeat for each roll.

Laying Floors with ReUseIt: The 1 m wide rolls should be laid at right angles to the direction of your dance floor. One person should walk back slowly with the roll while a second person, using a broom, smooths the ReUseIt down onto the floor. Cover the entire floor. Roll out the dance floor across the ReUseIt at right angles and allow 24 hours to acclimatise. Once perfectly flat roll back the floor onto its tube to the halfway mark. Remove the protective paper from the ReUseIt and roll the flooring back being careful to maintain alignment. Do the other half and repeat for each roll. Once the floor is laid it should be rolled with a 34 kg to 45 kg roller. A floor laid with ReUseIt can be rolled back up even after a year or so and the ReUseIt pulled from the floor leaving virtually no residue [page 298].

Cleaning the Floor: Protect your floor from street dirt by using appropriate mats near door entrances. Floors should be cleaned regularly with a recognised dance floor cleaner such as Stagestep Proclean or Rosco All Purpose Floor Cleaner. Do not use vinegar, cola, alcohol, solvents or any product that says it will leave your floor shiny. Stubborn scuff marks and tape residue can be removed with Wipeout Plus.

Storing the Floor: It is important storage is carried out correctly to avoid your floor becoming mis-shapen. Before storing your floors check they are clean with no old tape left in place. All floors should be taped and rolled onto a tube of at least 100 mm diameter. They should be rolled evenly with the edges level and then taped tightly. Wrap them in brown paper or polythene to keep them clean. Long-term storage of Super Bravo, Rave, Rosco Adagio should be on end. The ends should be protected with a piece of plywood. During use or touring the floors may be hung on a Dance Floor Trolley [page 163]. Ensure the flooring is tightly rolled and taped so it doesn't hang down in loops. Do not stack on top of each other or leave stored lying on the floor. Store upright as soon as possible to avoid the floor getting a set. Rosco Dance Floor should not be stored upright but left hung on a Dance Floor Trolley. Never put weights on top of rolls of flooring. Avoid excessive heat or cold and direct sunlight.

Instructions are supplied with each purchase or download at flints.co.uk

STAGESTEP RAVE

Rave

A lightweight portable or permanent flooring with a fibreglass lining offering stability and great lie-flat. This floor has a 1.6 mm thick PVC foam base giving a quiet cushioned feel. Ideal for all dance and theatrical activities, except tap. Recommended for ballet, jazz and contemporary dance.

- ✓ 2 m wide, 2 mm thick
- ✓ Fibreglass lining provides a stable floor which lies flat
- ✓ 1.6 mm thick foam PVC base layer
- ✓ Lightweight – just 1.74 kg per m²
- ✓ Life expectancy up to 10 years
- ✓ Guaranteed 5 years against wear
- ✓ Normally used for semi-permanent touring applications although also suitable for permanent installation

SPECIFICATION: Fire rating: DIN – EN 13501 – 1 [Cfl – S1]. Static load: N/A. 3.4 kg/m. Weight per linear metre: 3.47 kg.

code	Colour	length	width	price
SSRAVEBR	Black	30m	2m	P.O.A

ROSCO DANCEFLOOR

Rosco Dancefloor

The portable, durable floor for ballet, jazz and modern dance. Manufactured from 100% vinyl, Rosco floors won't crack, separate or fracture, and are self-sealing if punctured. The matt, non-skid finish is designed for the control required by dancers and the matt non-reflective finish helps prevent distracting reflected light. All Rosco floors are two-sided for equal wear on both surfaces and allowing you to chose the colour best suited to your design.

Specification: Weight: 2.56 kg per linear metre. Use for: modern, jazz, ballet. Installation: Temporary or Semi Permanent, Width: 1.6 m



code	Colour	length	width	price
ROS87206305	Black/Grey	5m	1.6m	£270.00
ROS87206310	Black/Grey	10m	1.6m	£500.00
ROS87206320	Black/Grey	20m	1.6m	£950.00
ROS87236305	Black/White	5m	1.6m	£270.00
ROS87236310	Black/White	10m	1.6m	£500.00
ROS87236320	Black/White	20m	1.6m	£950.00

Cold Weather

Dance floors are sensitive to temperature and can become stiff and brittle in very cold conditions. Harder floors, like those used for tap, are more affected than softer floors such as Rave. Allow your dance floor to warm up to room temperature [13 – 26°C] before use. To avoid ripples, once the flooring is rolled out it should be allowed to acclimatise to the highest temperature the room will reach during the performance before taping the seams.



Flints has stocked Rosco's famous dance floors for over 20 years, here are the most popular Rosco floors we sell. Contact us for samples and a full colour brochure.

ROSCO DUETTE

Rosco Duètte

Designed for both touring and permanent dance studio installations, Duètte's construction means it resisting rippling and waves and lays out flat for an easy installation. It's in a 2 metre roll width, which means fewer panels and seams to tape. Reversible, available in Black/Grey or Black/White. Specification: 3.2 kg per linear metre, Use for: Ballet, Modern, Jazz or Hip Hop, Installation: Temporary or Semi-Permanent, Width 2 m

NEW



code	Colour	length	width	price
ROS87207905	Black/Grey	5m	2m	£360.00
ROS87207910	Black/Grey	10m	2m	£675.00
ROS87207920	Black/Grey	20m	2m	£1,275.00
ROS87237905	Black/White	5m	2m	£360.00
ROS87237910	Black/White	10m	2m	£675.00
ROS87237920	Black/White	20m	2m	£1,275.00

ROSCO CHROMAKEY

Rosco Chromakey

Chromakey Green/Blue Dancefloor that matches the very popular Rosco Chroma key paints perfectly, eliminating the need for re painting your studio floor between shoots.

Specification: 2.7 kg per linear metre, Installation: Temporary.

NEW



code	Colour	length	width	price
ROS87267905	Chroma Green/Blue	5m	1.6m	£360.00
ROS87267910	Chroma Green/Blue	10m	1.6m	£675.00
ROS87267920	Chroma Green/Blue	20m	1.6m	£1,275.00

LE MARK HARMONY

Le Mark Harmony High Gloss Black Vinyl Floor

100% pure vinyl. Recommended as a temporary or semi-permanent floor in studios, multi-purpose rooms and showrooms. The highly reflective surface would suit a soft shoe. Use for: events, commercials, fashion and car shows.

code	Colour	length	width	thickness	per 25 m roll
PROHGVBFR	Black	25m	1.5m	2mm	£998.00

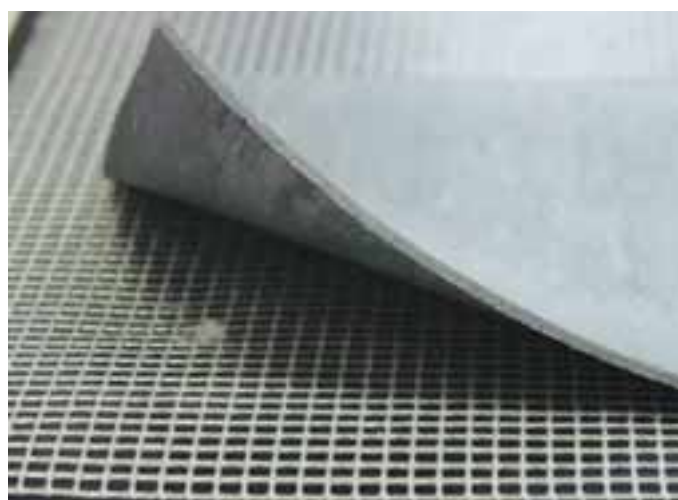


RE-USE-IT

ReUselt

The revolutionary way to install flooring! Now you can install virtually any floor surface over any existing sub-floor* without messy adhesives, or having to hire expensive flooring contractors. A semi-permanent installation with permanent performance and feel! The ReUselt system gives you all the benefits of a permanent installation with the ease of a semi-permanent installation without the use of top tape or the hassle of resetting your floor every two years. Yet when you need to remove the floor you simply peel it up and take it away. Simply purchase new supply of ReUselt and install at your new location. Used ReUselt can be removed from the sub-floor and thrown away. You can install it yourself and it's idiot proof.

*An exception is MDF which can be very dusty even when you think it is clean as because of the way it is made there are always particles in the pores. MDF is almost never used for any type of flooring but if it is used make sure it is sealed MDF so then bonding won't be an issue.



code	description	length	width	price
SSRU1000	Full roll	25m	1m	£127.80

DANCE FLOOR TROLLEY

Dance Floor Trolleys

These trolleys will hold 6 rolls of floor up to 2 m wide. Working load limit of 800 kg. Painted black. We will deliver free of charge to UK mainland addresses. Supplied flat packed. Pole lengths : 2.45 metres



code	length	width	height	price
DFTROLLEY	2.2m	1m	1m	£1,295.00

MAINTENANCE

Wipeout Plus

Improved grime removing formula in a convenient pump spray bottle. Stagestep introduced a reformulated Wipeout that is eco-friendly and easy to use. Ideal for the removal of dye and scuff marks, the improved formula penetrates, loosens, breaks down and dissolves many unwanted stains. Wipeout works on all vinyl and non-porous surfaces. Not effective on aluminium compound tap residue. 200 ml pump spray bottle.

See also Label Remover [page 387]

code	volume	price
SAFWP	200ml	£33.86



Proclean

Great value for a professionally formulated multipurpose cleaner. For light cleaning the 5 L flagon can be diluted up to 100 times. Use on unpolished floors, walls, laminates and all other hard washable surfaces.

code	volume	price
SAFPC	3.79L	£34.85



Rosco Heavy-Duty Floor Cleaner

For stripping and deep cleaning Rosco Floors.

code	volume	price
ROS1120034	1L	£21.00
ROS1120128	3.79L	£57.75



Rosco All Purpose Floor Cleaner

Designed for the routine, regular cleaning of all Rosco Floors.

code	volume	price
ROS1160034	1L	£28.00
ROS1160128	3.79L	£71.50

